



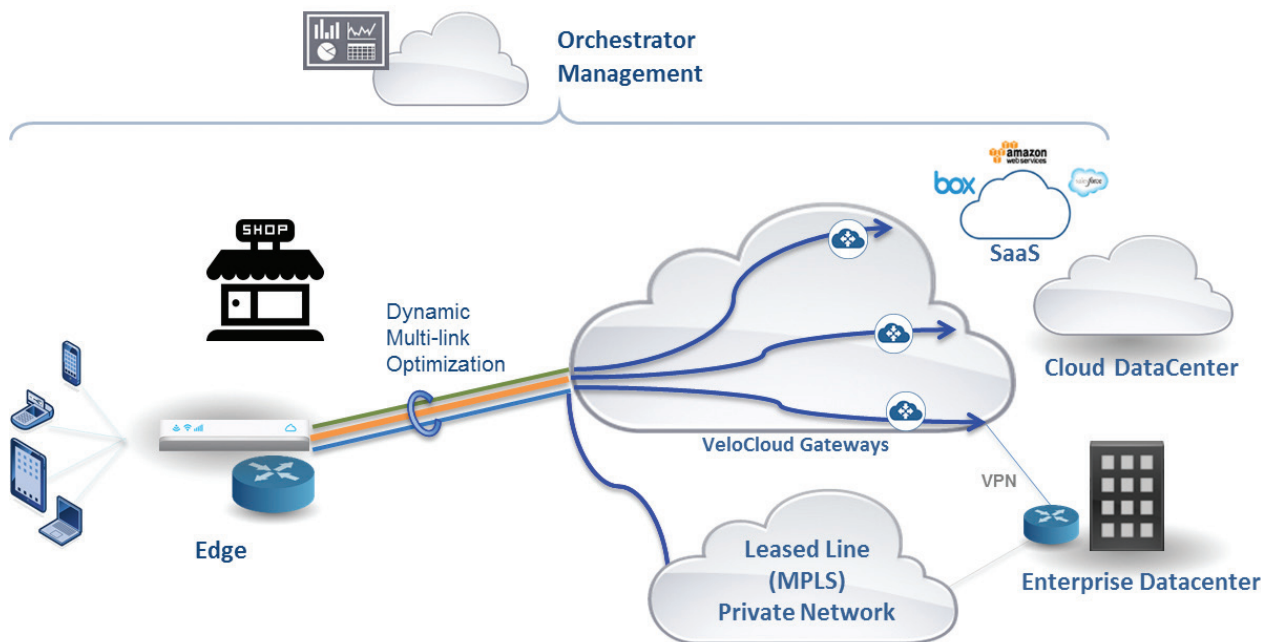
SOLUTION BRIEF: RETAIL

SIMPLIFY RETAIL BRANCH NETWORK WITH CLOUD-DELIVERED SD WAN

VeloCloud delivers Flexible and Secure, Enterprise-grade WAN to easily connect all the Retail remote branches. With VeloCloud Solution, Retail IT can deploy a WAN Solution that:

- > Enables multiple, inexpensive broadband links including 4G/LTE to behave like a secure and high-bandwidth, Enterprise-grade WAN links for reliable access to retail cloud applications and critical data
- > Meets PCI compliance mandates to securely transport payment card information over the WAN
- > Centralized management and policy-based enforcement enables faster deployment and ease of management of multiple remote sites
- > Reduce per-branch Total cost of ownership with Network-as-a-Service subscription

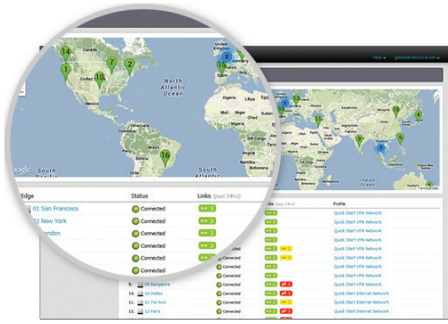
VELOCLOUD NETWORK-AS-A-SERVICE



VeloCloud provides a complete cloud-delivered SD WAN solution that includes cloud networking and multipath-optimization to make ordinary broadband behave as Enterprise-grade links and a virtual network service catalog for efficient orchestration.

For a simple and subscription-based cloud-delivered WAN solution, contact us today: www.velocloud.com/eval | (650) 209-4180

FLEXIBLE WAN SOLUTION FOR RETAIL BRANCH NETWORKS



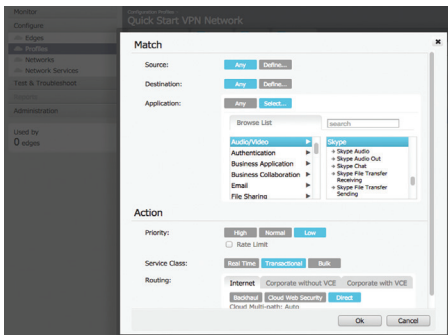
SIMPLIFY WAN DEPLOYMENT WITH CLOUD

- > Fast provisioning of remote branches in minutes with zero IT touch and cloud activation
- > Enterprise-grade WAN with dynamic multi-path steering and on-demand Link remediation for performance and reliability
- > Automatic selection of cloud gateways for best direct path eliminates backhauling of WAN traffic for SaaS applications like salesforce.com and Oracle on-demand CRM
- > Subscription based Network-as-a-Service eliminates upfront CAPEX costs

MEET PCI 3.0 COMPLIANCE WITH ADVANCED SECURITY

- > Stateful and context aware firewall (application, user, device) for advanced security
- > Automatic, single click Cloud VPN for branch-to-datacenter and direct branch-to-branch traffic. Monitor real-time status and health from the central cloud console

PCI 3.0 Guideline	VeloCloud Compliance	Benefit
1.2.3 – Segregate PCI Network	VLAN trunking for wired and wireless with VLAN based firewall	Implement network policy based on PCI guidelines for max security
4.1 – Use strong cryptography	WPA2, WPA2-PSK encryption for wireless clients, AES256 for all	All traffic encrypted with strong AES256 and never open on Internet
6.1 – Use latest security patches	Automated firmware update from cloud to edges	Client update enforced on edges. No unsecure cardholder data in the network.
7.2 – Restrict access	Role-based access control with granular privileges for users	Ensure resource control and usage meets PCI guidelines
11.0 – Regularly test security	McAfee secure, daily penetration checks, Approved vendor scanning	Regular, automated security check of all infrastructure components



CENTRALIZED MANAGEMENT, CONTROL AND POLICY ENFORCEMENT

- > Enterprise wide monitoring and group policy setting for all sites, ISPs, applications and users
- > Smart QoS with application-aware classification for 2200+ apps for granular control based on custom business objectives
- > Business policies based on application priorities, usage, and security goals
- > Unified architecture to scale from one site to hundreds of remote offices, seamlessly. Full interoperability with other WAN vendors for remote branches of 3rd party partners

“Our retail locations takes credit card payment in the stores. Our POS network with VeloCloud edge, IDS systems and the software at the endpoints are strictly compliant. We are happy with the PCI 3.0 compliance adherence from VeloCloud.”

—AARON GABRIELSON, IT PROJECT MANAGER, REDMOND, INC.



ABOUT VELOCLOUD

VeloCloud, a cloud networking services Company, simplifies branch networking by transforming ordinary broadband links into the fast, resilient and secure connections needed by today’s distributed enterprises. VeloCloud is the first to provide all three elements needed to achieve a cloud-delivered WAN: cloud networking, virtualized services and enterprise-grade Internet. VeloCloud has its headquarters in Los Altos, Calif., with a development center in Chennai, India. For more information, visit www.velocloud.com.



295 N. Bernardo Ave, Ste. 200 > Mountain View, CA 94043 > +1.650.209.4180 > contact@velocloud.com > www.velocloud.com